



SPORTSMAN SNOWMOBILE RACK - CHAINSAW HOLDER INSTALLATION

CONTENTS IN BOX: **CHAINSAW HOLDER WITH 16" BAR GUARD**

MOTOR SUPPORT AND HARDWARE PACKAGE (S)

- (2) 1/4 X 1 1/4" LONG ALLEN BOLTS
- (2) 1/4 THIN LOCK NUTS
- (2) 9/16" LONG BLACK SPACERS

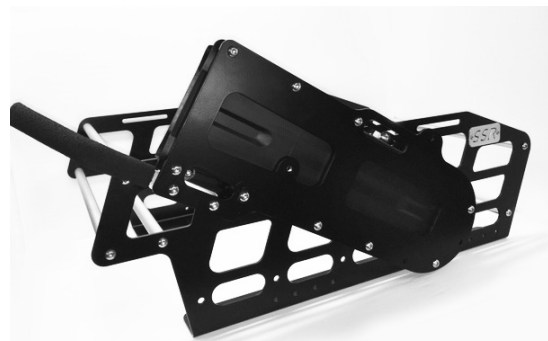
MOUNTING HARDWARE PACKAGE (CM)

- (3) 1/4 X 1" LONG ALLEN BOLTS
- (3) 1/4 LOCK NUTS
- (6) 1/4 WASHERS
- (3) 1/4 LONG WHITE SPACERS
- (1) 1/4" X 1/4" LONG ALLEN BOLT
(ONLY USED IF MOUNTING SSR AXE HOLDER TO CHAINSAW HOLDER)

1 Install motor support using package (S)
Insert 1 1/4" allen bolts through holes marked by arrows, on inner side of holder place the two black spacers then motor bracket as shown. Use thin lock nuts on back side and tighten all bolts in circled area.



2 The Chainsaw holder will be mounted on right side of the rack (throttle side) If you have the SSR Axe holder currently installed it will have to be removed and installed on the chainsaw holder after installation (step 5).



3 The chainsaw holder will be mounted using packaged (CM) place washers on three 1" bolts and insert through mounting holes of holder then place white 1/4" spacers between rack and holder with washer and lock nut on inside of rack in locations described in (step 4).



SPORTSMAN SNOWMOBILE RACK - CHAINSAW HOLDER INSTALLATION

- 4 The chainsaw holder will be mounted as shown, using one of the two bottom holes circled and the top slots in the rack. On the SSR 130 the bolt on the crossbar (shown with arrow) will be removed and used as the rear mounting location for holder a nut and washer are not needed as the mounting bolt will be threaded back into the crossbar. Once installed tighten all bolts.
- 5 If you have optional SSR Axe Holder it can be mounted to the Chainsaw holder using the marked holes. (refer to axe holder installation) The hardware from the axe holder will be used for this. Except for the hole marked with the arrow this bolt will require the 1/4" x 1/4" long allen head bolt provided in package (CM).
- 6 Place Chainsaw in holder. Check the mortar support and ensure that the saw is properly supported. Should the support need adjustment, slightly bend it until the saw is level on the motor support. Once proper support is obtained, secure your saw using a using rubber bungee strap (Not supplied).



!WARNING! Always securely strap chainsaw in holder. Follow snowmobile manufactures weight limit for cargo. Check load on rack periodically.