



SSR TES & TLT MODELS - ASSEMBLY / INSTALLATION

CONTENTS IN BOX:

RACK AND HARDWARE

- RIGHT AND LEFT SIDE PANEL
- (6) POLISHED CROSSBARS
- (2) RUBBER COVERED CROSSBARS

'PACKAGE A' CONSISTS OF

- (16) 1/4" X 1" LONG ALLEN HEAD BOLTS
- (4) 1/4" WASHERS
- (1) 5/32 ALLEN WRENCH
- (6) RUBBER COVERS FOR TIE DOWNS

MOUNTING HARDWARE

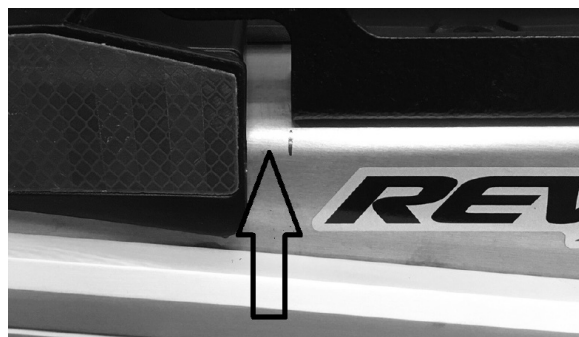
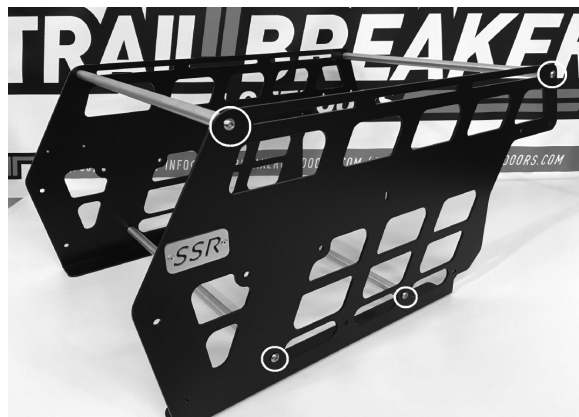
'PACKAGE B' CONSISTS OF

- (4) 1/4" X 3/4" ALLEN BOLTS
- (8) 1/4" WASHERS,
- (4) 1/4" LOCK NUTS
- (4) 3/16 RIVETS

OPTIONAL RACK EXTENSION

- RIGHT AND LEFT SIDE PANEL
- (2) CONNECTOR PLATE
- (2) POLISHED CROSSBARS
- (4) 1/4" X 3/4" LONG ALLEN BOLTS
- (8) 1/4" WASHERS
- (4) 1/4" LOCK NUT

- 1 Place rack sides in rear cargo area of snowmobile with logo facing out and towards front of snowmobile. Install 4 cross bars in location shown with 1" bolts hand tight.
- 2 Position rack so it is 1/2" ahead of rear light assembly on both sides.





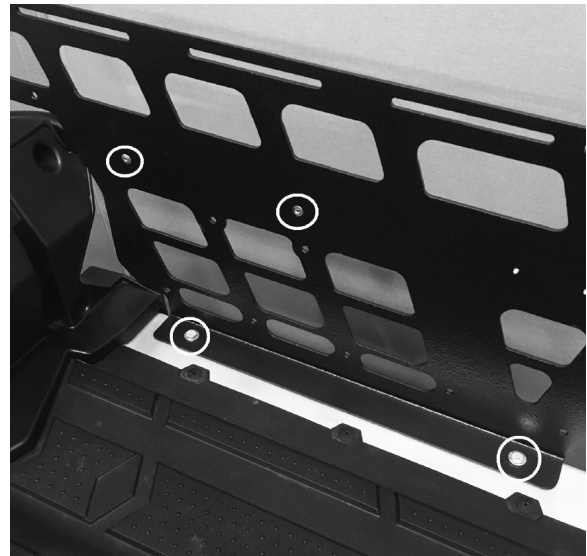
SSR TES & TLT MODELS - ASSEMBLY / INSTALLATION

- 3 Make sure rack is positioned correctly. ½" from rear light and flush with outside tunnel. Mark holes circled in picture on both sides of rack. Remove previously installed cross bars and remove rack sides.

Drill bottom holes in tunnel 1/4" and top holes in round tubing 3/16" .

Place rack sides in cargo area, install four 1/4" x 3/4" bolts with washers through rack and tunnel on both sides. Install washers and 1/4" locknuts underneath tunnel.

Install Four rivets through rack and into tubing on both sides and rivet into place. Tighten 1/4" nuts.



- 4 After rack sides are installed on snowmobile the 6 polished cross bars are to be installed as shown 3 in rear of rack and 3 in front of rack using 1/4" x 1" long bolts. The two rubber cover cross bars can be installed in the upper slots using 1/4" x 1" bolts with 1/4" washers. These are adjustable and can be placed in slots where needed.

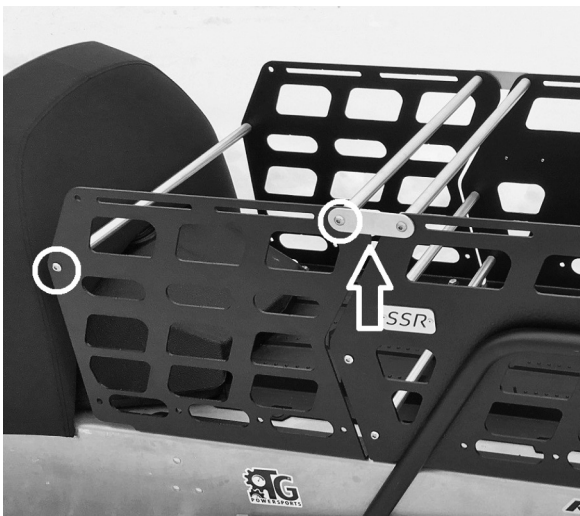
If installing optional auger holder please read Ice Auger Installation sheet for mounting of holders.





SSR TES & TLT MODELS - ASSEMBLY / INSTALLATION

OPTIONAL RACK EXTENSION INSTALLATION (EXPEDITION SPORT)



Remove two up seat from snowmobile.

Remove front upper bar from main rack and reinstall with rack connector plate on outside of rack.

Place rack extension sides on machine and fasten 2 crossbars and connector plate as shown in picture, with four 1/4" x 1" bolts.

Make sure rack is centered on tunnel and mark the 4 holes in tunnel. Remove rack and drill 1/4"

Replace rack on tunnel and install four 1/4" x 3/4" bolts with 1/4" washers through rack and tunnel.

Install four 1/4" washers and lock nuts underneath tunnel. Tighten 1/4" nuts. Tighten front crossbar and connector plate cross bars.

